



# MONTHLY MEMBERSHIP PROGRESS REPORT

District 2 S1

Results as of: 3/31/2016

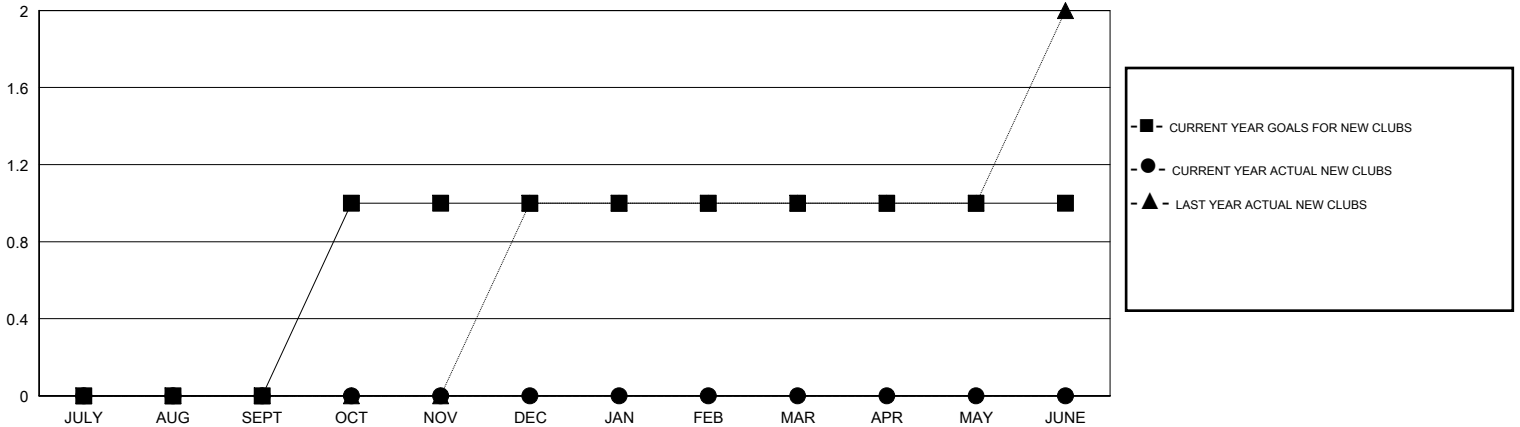
GMT: HAL GRIFFIN

LOCATION TEXAS

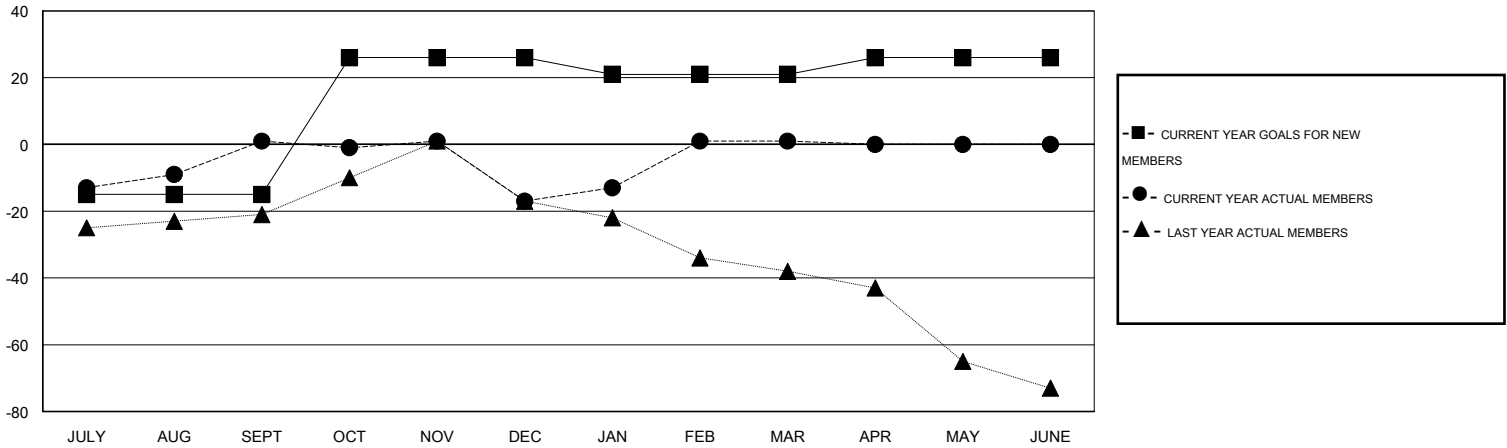
GMT CA 1

Clubs					Members				
RESULTS FOR 2015-2016					RESULTS FOR 2015-2016				
QUARTER	NEW CLUB GOAL	NEW CLUBS	DROPPED CLUBS	NET GAIN/LOSS	QUARTER	NEW MEMBER GOAL	CHARTER AND NEW MEMBERS ADDED	DROPPED MEMBERS	NET GAIN/LOSS
JULY/AUG/SEPT	0	0	0	0	JULY/AUG/SEPT	-15	60	59	1
OCT/NOV/DEC	1	0	1	-1	OCT/NOV/DEC	41	46	64	-18
JAN/FEB/MAR	0	0	0	0	JAN/FEB/MAR	-5	89	71	18
APR/MAY/JUNE	0	0	0	0	APR/MAY/JUNE	5	0	0	0

GOALS AND ACTUAL NEW CLUBS CUMULATIVE



GOALS AND ACTUAL MEMBERS CUMULATIVE



DROPPED CLUBS: 1	34 CLUBS OF 53 ADDED 1 OR MORE NEW MEMBERS	<u>GENDER DISTRIBUTION</u>	
		MALE	1,265 (72.99%)
<u>DROPPED MEMBERS</u>		FEMALE	468 (27.01%)
DECEASED	13	<a href="#">CLICK HERE FOR HEALTH ASSESSMENT DATA</a>	
CLUB CANCELLED	14		
OTHER	167		
TOTAL	194	FAMILY UNIT MEMBERS	234
		HEAD OF HOUSEHOLD	114
		NON-HEAD OF HOUSEHOLD	120